

---

# Content

Chapter 1	The software interface introduction.....	4
1.1	Start interface.....	4
1.2	The software interface functions area.....	4
1.3	Main function.....	5
Chapter 2	Teacher recorder instruction (OPTIONAL).....	14
Chapter 3	Student terminal operation instruction.....	15
Chapter 4	Language Lab Installation Guide.....	16
4.1	Preparation before Installation.....	16
4.2	Test steps.....	16
4.3	Signal flow graph.....	16
4.4	Trouble shooting.....	18
4.5	Signal cable assembling.....	18

---

## System parameters for models of SurTech DLS1 - DLS10

Power: AC  $220\pm5\%$ V/50Hz

Working voltage: DC+12V

Working temperature:  $-5^{\circ}\text{C}$ — $40^{\circ}\text{C}$

Frequency: 125—10000Hz  $\pm 2\text{db}$

S/N:  $\geq 60\text{db}$

Crosstalk attenuation:  $\geq 60\text{db}$

Stereo isolation:  $\geq 50\text{db}$

Student capacity:  $\leq 120$  seats

Distortion rate:  $\leq 3\%$

Set the resolution of monitor to 1024\*768 before install the software

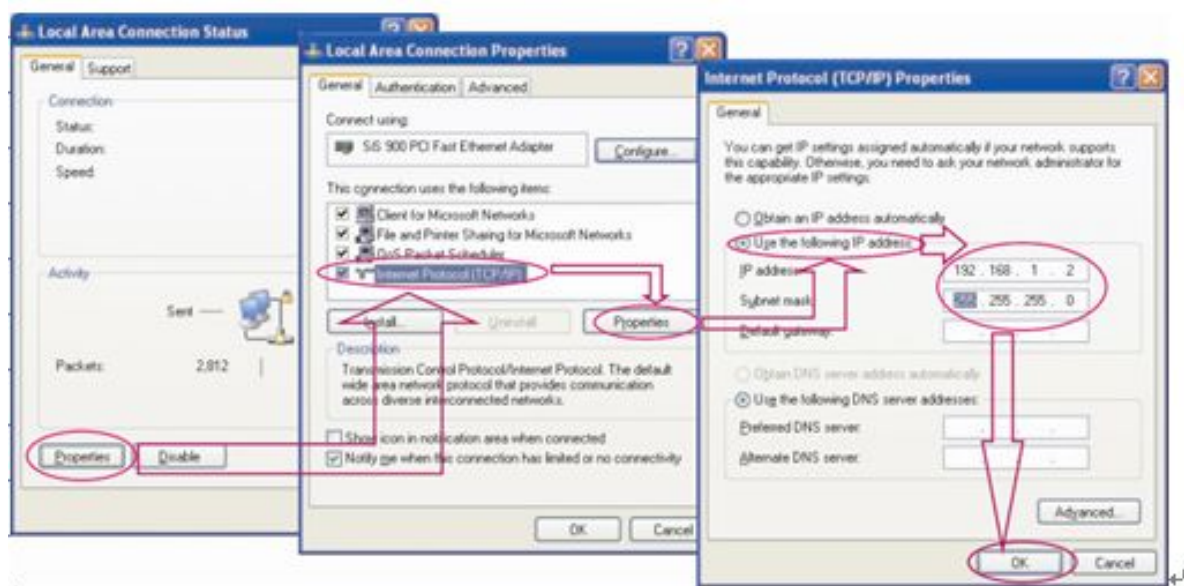
## TCP/IP net agreement set

Click [my network places] by pressing the right button of the mouse, click [properties] , then come to [internet connection], double-click[local area connection], click[ properties ] button.

Then tick[Internet protocol(TCP/IP)], and click[properties]button.

In the “Internet protocol (TCP/IP) properties]interface, tick[use the following IP address], and key the IP address, such as 192.168.1 8 , subnet mask is 255.255.255.0. press enter after finish.

Details as the following diagram:

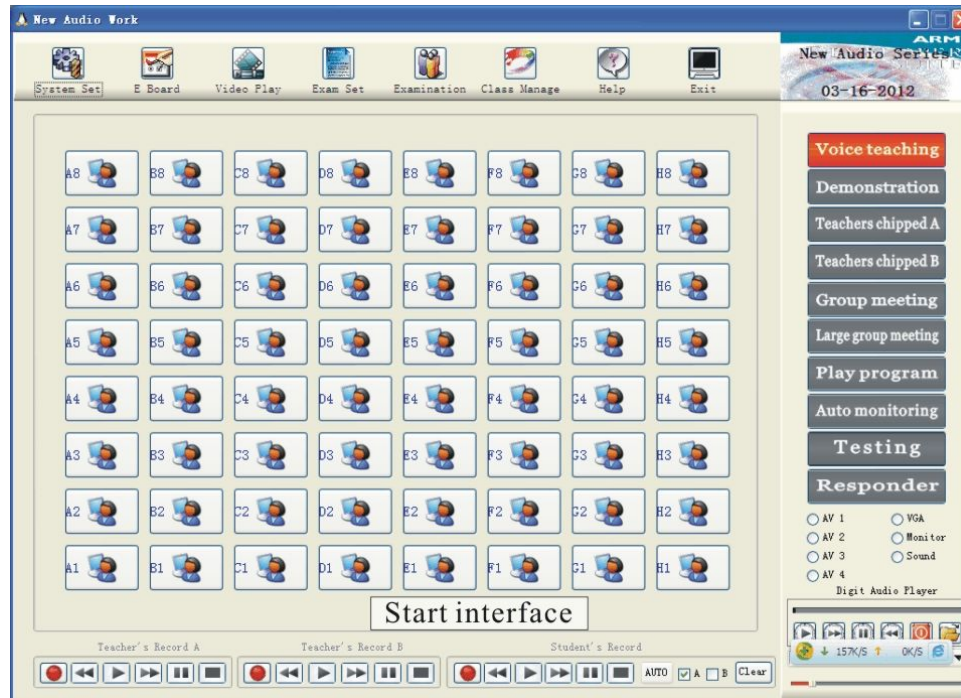


**If link to campus network,one additional net card will be needed, and the net cable is connected to the card**

# 1. The software interface instruction

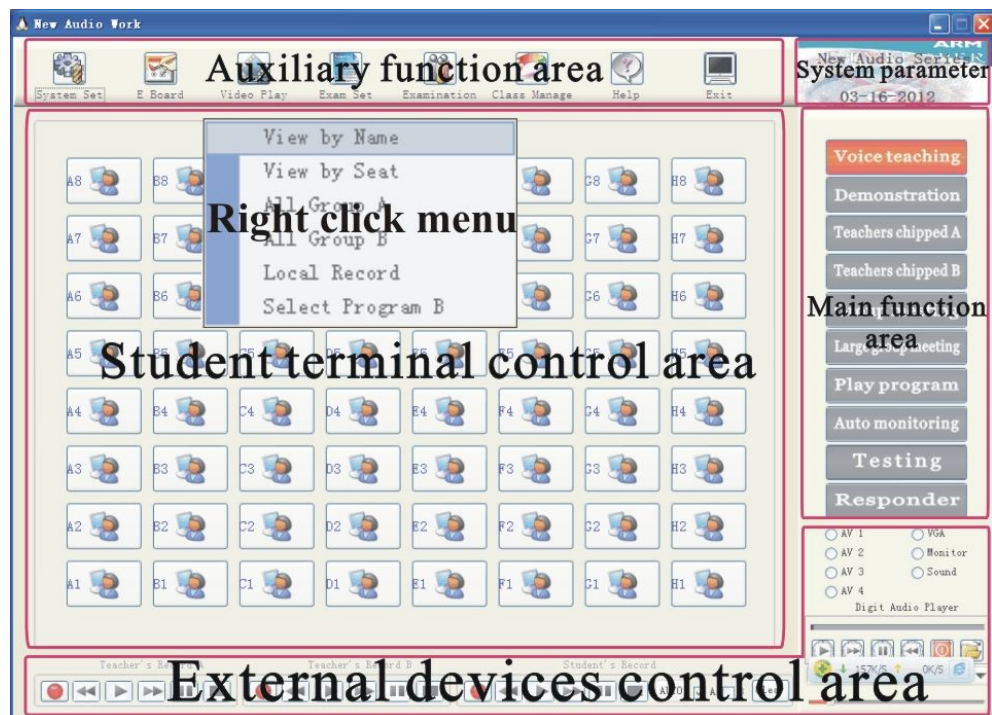
## 1.1 Start interface

On the teacher computer desktop, click the New Audio to open the teacher interface, picture as following:



## 1.2 The software interface functions area

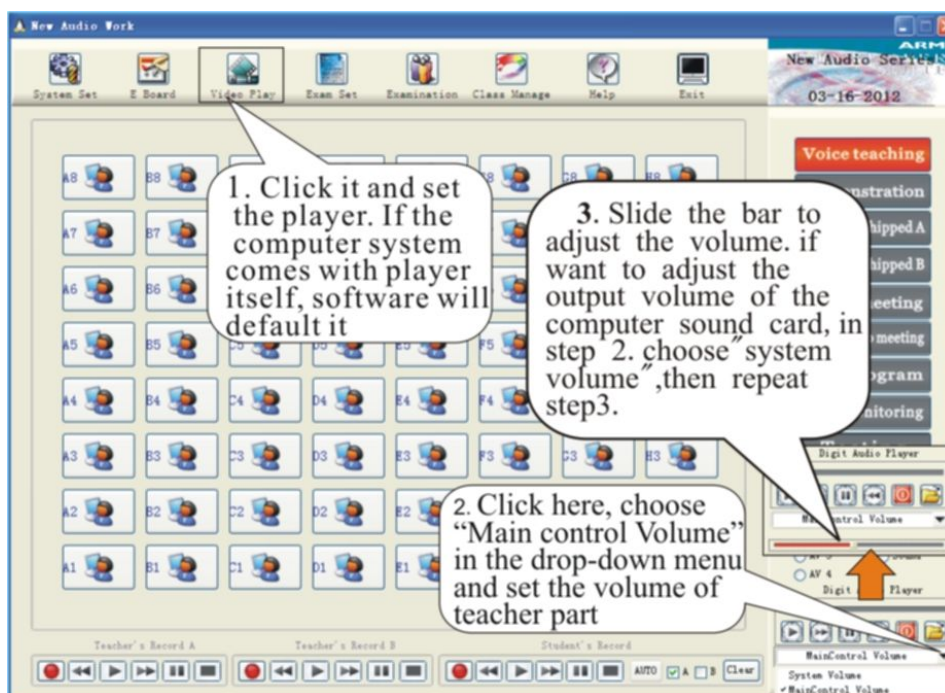
According to the different functions, the software interface is divided into Main function area, Auxiliary function area, student terminal control area, External devices control area, system



parameter and right button menu.

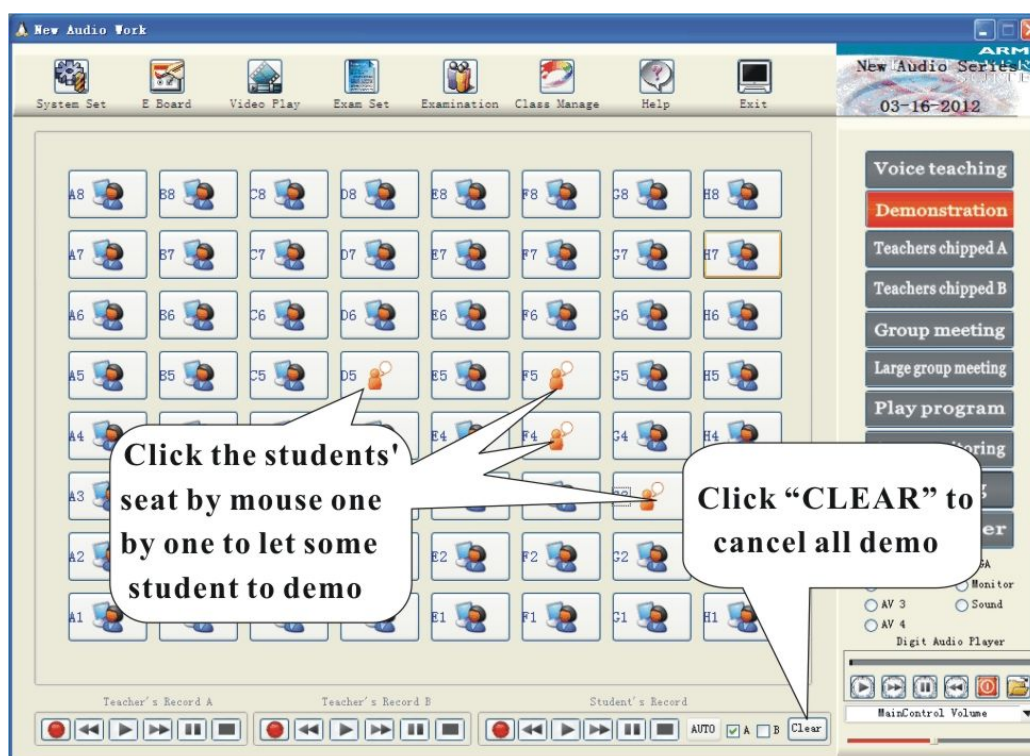
## 1.3 Main function

For the first time use, we have to activate the player. After run the software, it will enter to [Voice teaching] automatically. Click the relevant button to enter each function model.(turn on the main control volume before use, or the teacher part has no voice, picture as following)



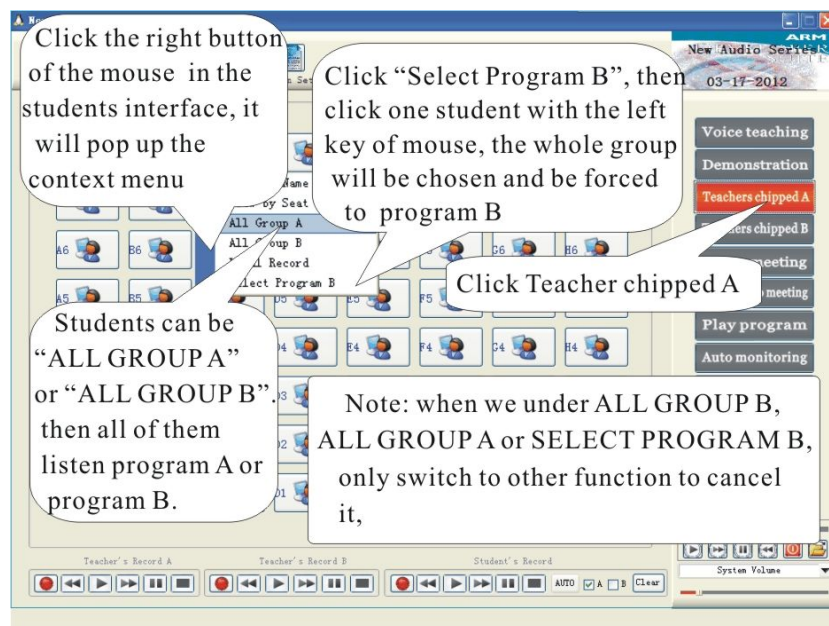
**1. Voice teaching:** in this state, all programs are shielded. Students can hear what the teacher says.

**2. Demo:** Click [Demonstration], choose one or more students to join in discussing. For example, you want student "A3" and student "A6", "F5" join in conversation, Just press "A3" "A6", "F5", of cause teacher can talk with them. All classmates can hear their conversation





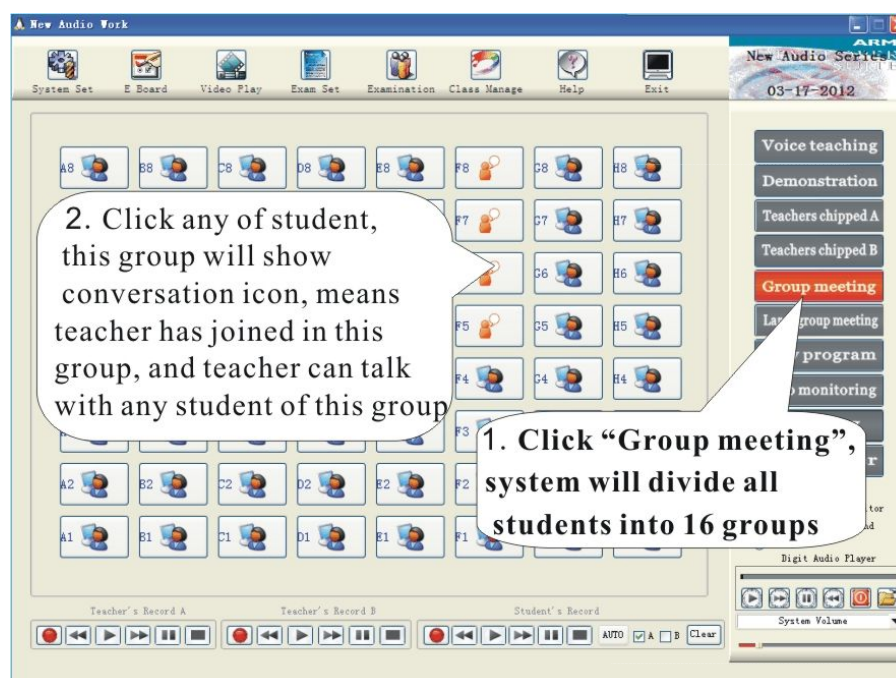
**3. Teachers chipped A:** The teacher explains what the tape machine (A) plays by microphone. Students can hear the mixed voices that the tape machine (A) plays and the teacher explains on Channel A, while the students listening to the program B, students can't listen what tape machine (A) plays on Channel B. if teacher force all students to listen to tape machine(A) or (B), just click mouse right key, it will pop up [All Group A] or [All Group B], choose [All Group A] or [All Group B] can force students to listen to tape machine(A) or (B). Meanwhile, teacher can force the whole group to listen one program with right key. First, click [Select Program B] in right click menu, then click any student, the whole group will be forced to tape machine (B).



**4. Teachers chipped B:** the function is same as **Teachers chipped A**

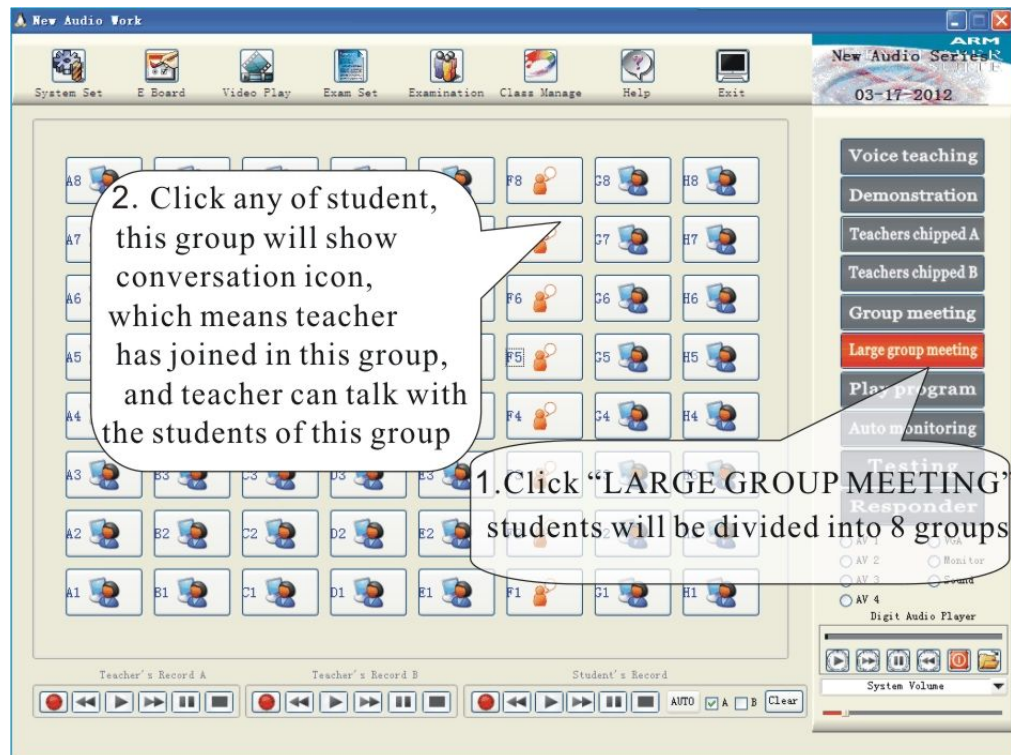
**5. Group meeting:** Target: let student discuss the question that the teacher asked. Choose [Group meeting], all student will be divided to each small group, half and half in each line.

Teacher can join in any group only if he clicks the student seat in this group.



**6. Large Group meeting:** Click [Large Group meeting], all students in one line are as a group

Teacher can click any student in the line to join in this group

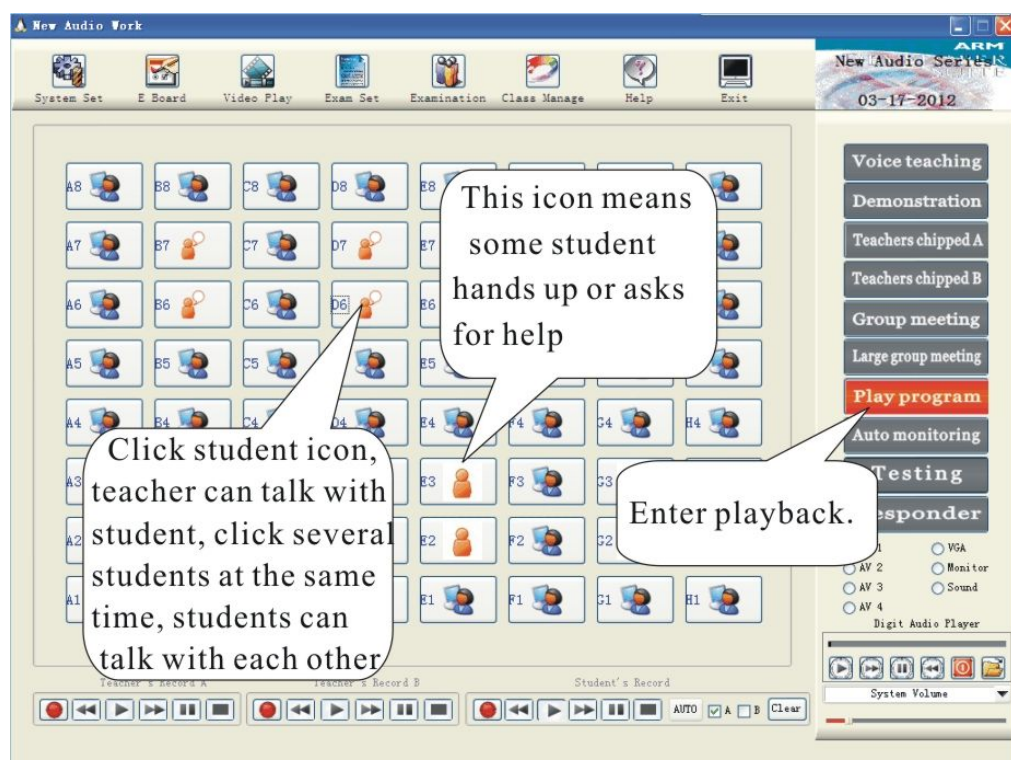


**7. Play Program:** Students can study by themselves by listen to Program A or Program

First play tape machine A and B, and press “play program” button

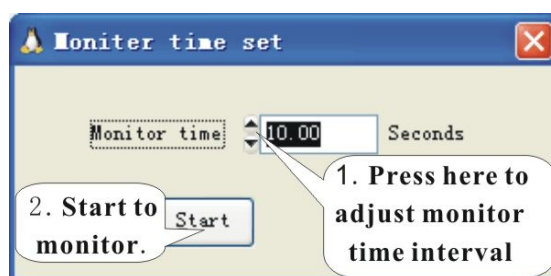
There are two program but in different channels. Students can select a program by themselves.

Press “A” key or “B” key in students’ recorder and select to listen to program A or program B



## 8.Auto monitoring:

Target: the teacher can monitor everyone when student is studying by themselves,  
Just click[Auto monitoring], the dialog is shown as picture

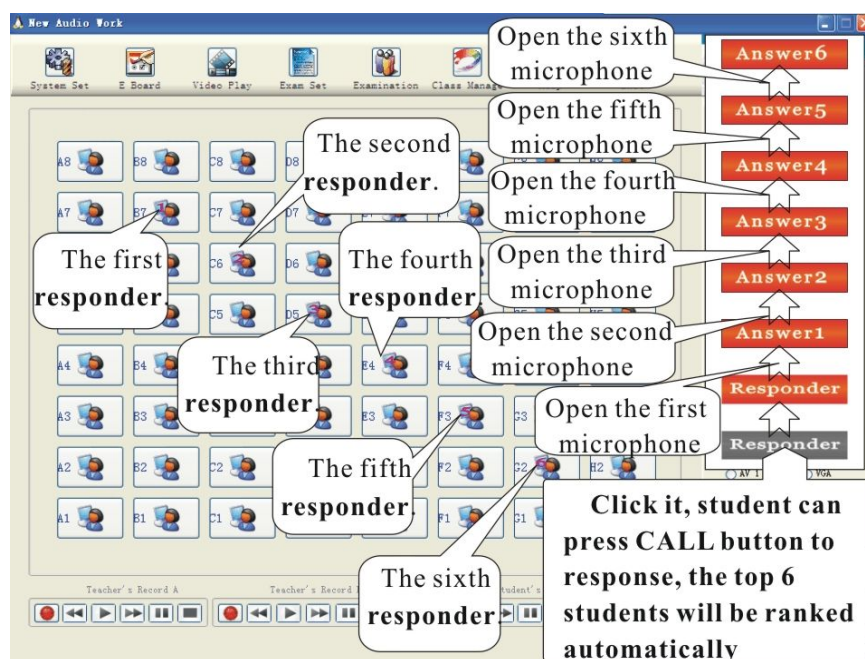


Please select monitor time, the system can monitor student automatically

## 9.Responder:

**Target:** Let the students participate in study, so as to make the atmosphere active

Press [Responder] button, it turns to red color, and students can press “Call” button on their machine, the order No. will be showed on the side of student seat, and teacher can press “Answer” button, students who press the “Call” button at first can win to talk with the teacher. All students can listen what they say. If the teacher wants to talk with the second one, then press “Answer” button. The screen shows the seat number of the student who answers



## 10. External-device control

(1) .AV1 (AV2, AV3) :click AV1 (AV2, AV3), the corresponding device will broadcast program to student by the channel A. the three channels will switch mutually

(2)、Speaker: click “ sound” ,then it will broadcast the sound in the teacher earphone to all class by the speakers

(3)、VGA: click VGA, the system can control one channel VGA signal(it is valid when student side is connected with video device)

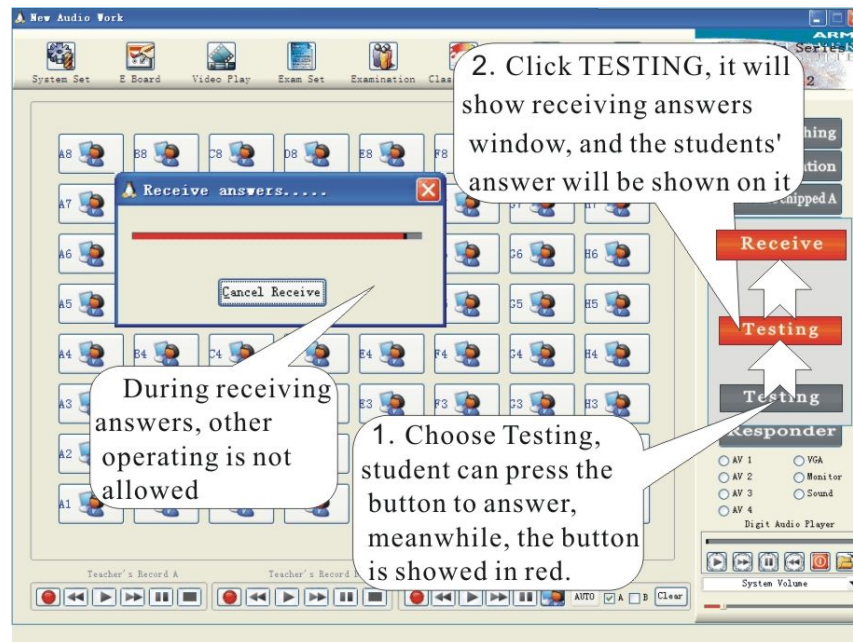




- (4) .Monitor: Monitor: click [Monitor], then click a student seat, teacher can monitor what's he doing
- (5) .Clear, if you want to cancel monitor, u can point "clear" and press the button

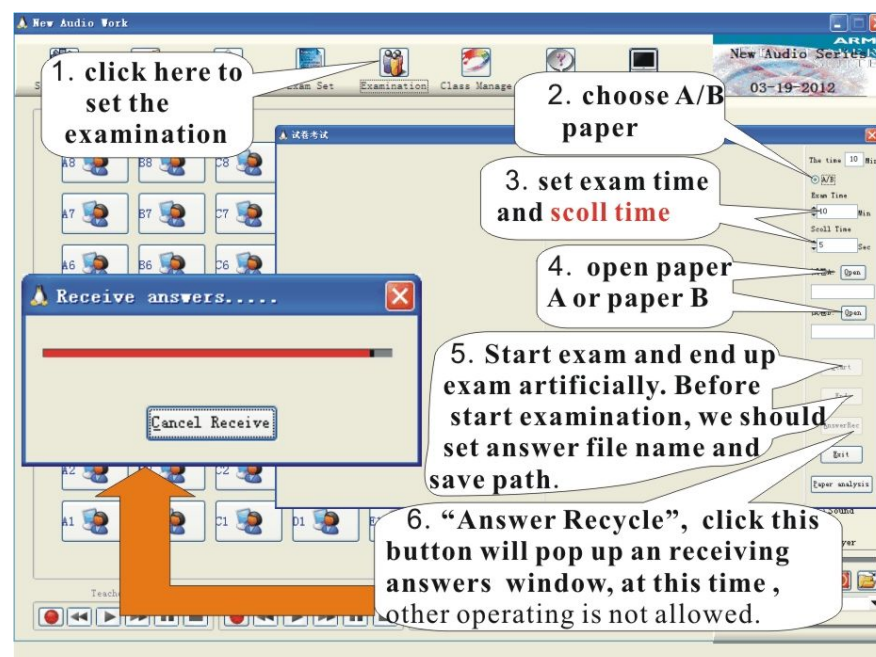
## 11. Testing& Examination

**A. Testing:** Click[Testing], student enter to testing, [Testing] button turns red, click red [Testing] again, the button is changed to [Receive], it will pop-up receiving path. The student answer is listed in the seat.



**B. Examination:** click the [examination] button in the Auxiliary function area, the movable window is with exam control function, which includes single paper exam and double paper exam. The system default it as single paper exam. If teacher want to do double paper exam, just choose [A/B], please refer to the following picture:

Receive answers: after finish the exam, click [Receive] button, the system will pop-up receiving path

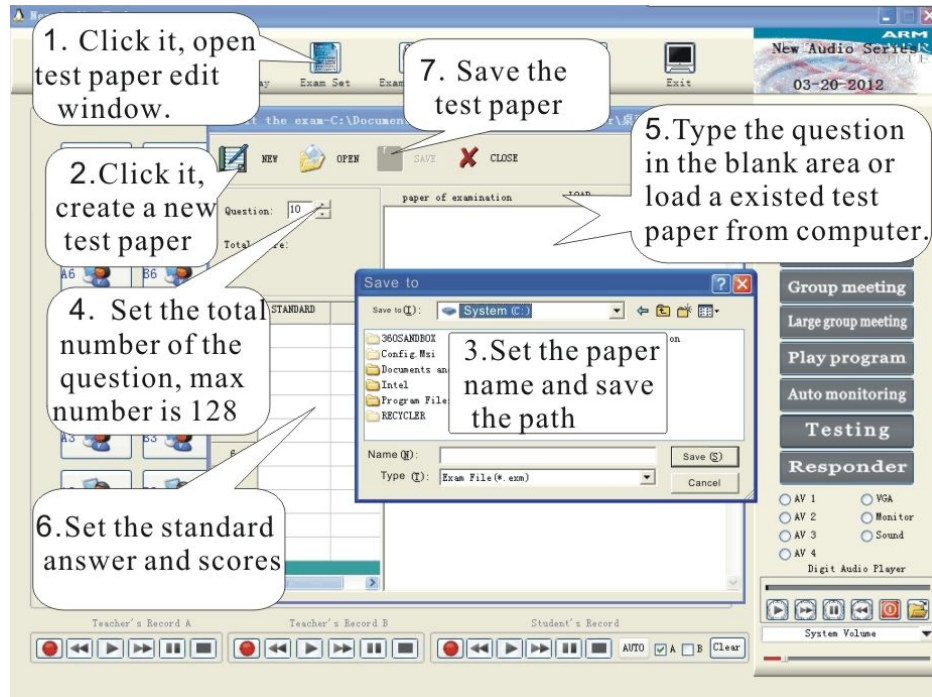


When receiving answers, it will pop up a receiving answers window, at this time, other operation is not allowed

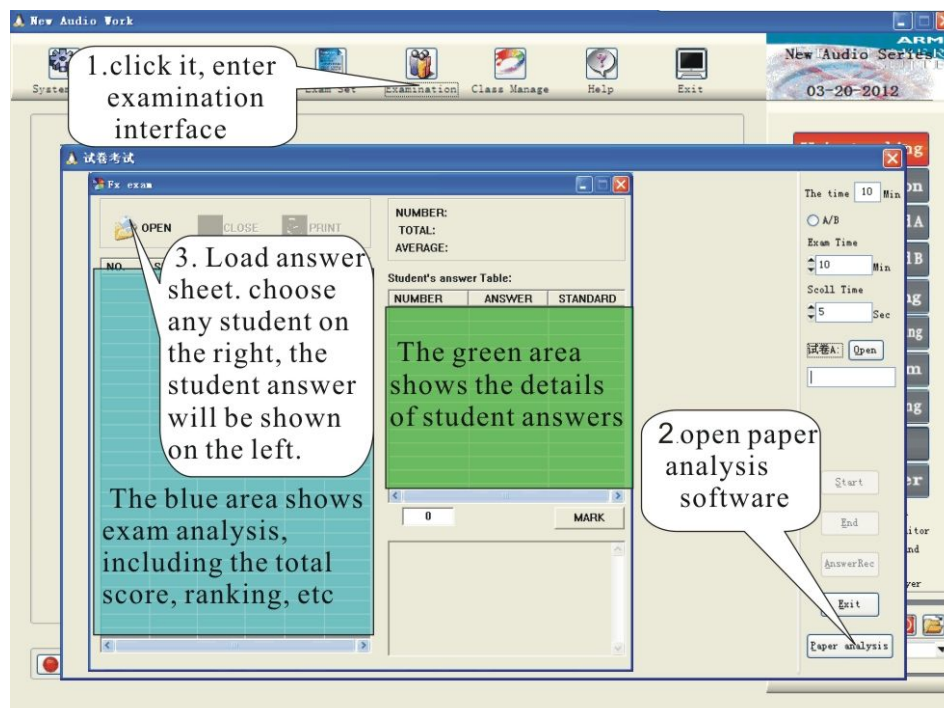
**D. Edit Examination Question:** click [Exam Set] in the Auxiliary function area, type the question in the pop-up window or load the existed test paper from the computer, see as picture.

Note: the maximum question number is 128, and only choice question.

Set the standard answer and score or each question, then calculate and analyze the students' result

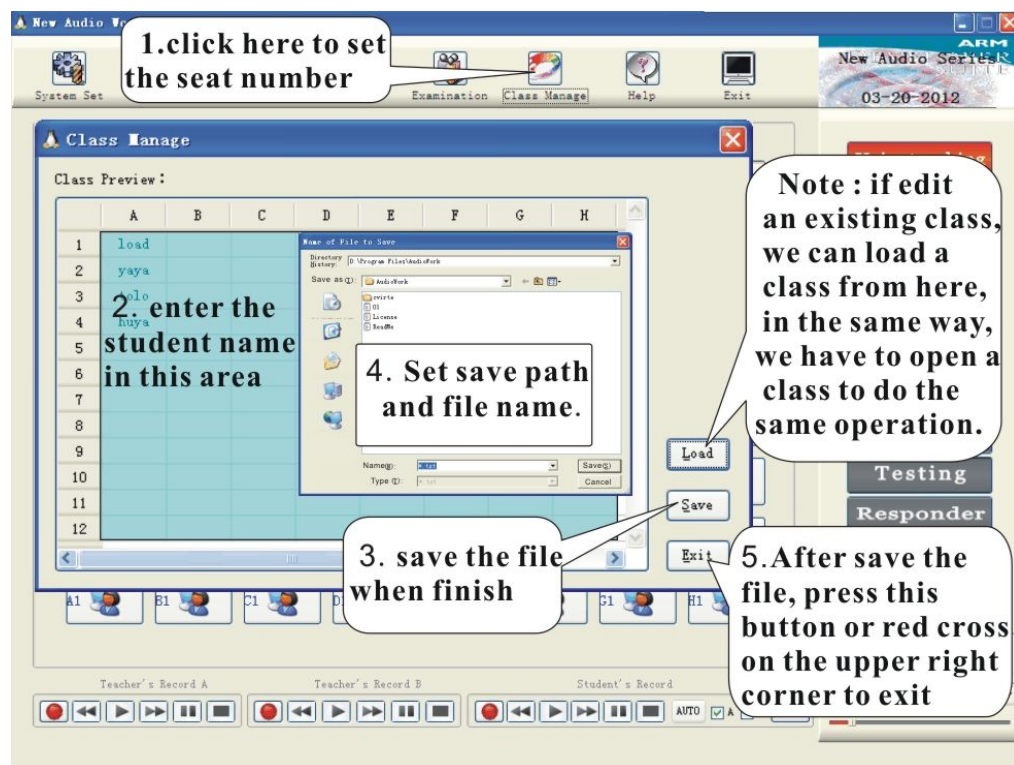


**E. Analyze the exam:** choose[Examination] in the Auxiliary function area, choose [Paper analysis] in the pop-up window, operate as picture in the pop-up exam analyze window, the system will make the papers

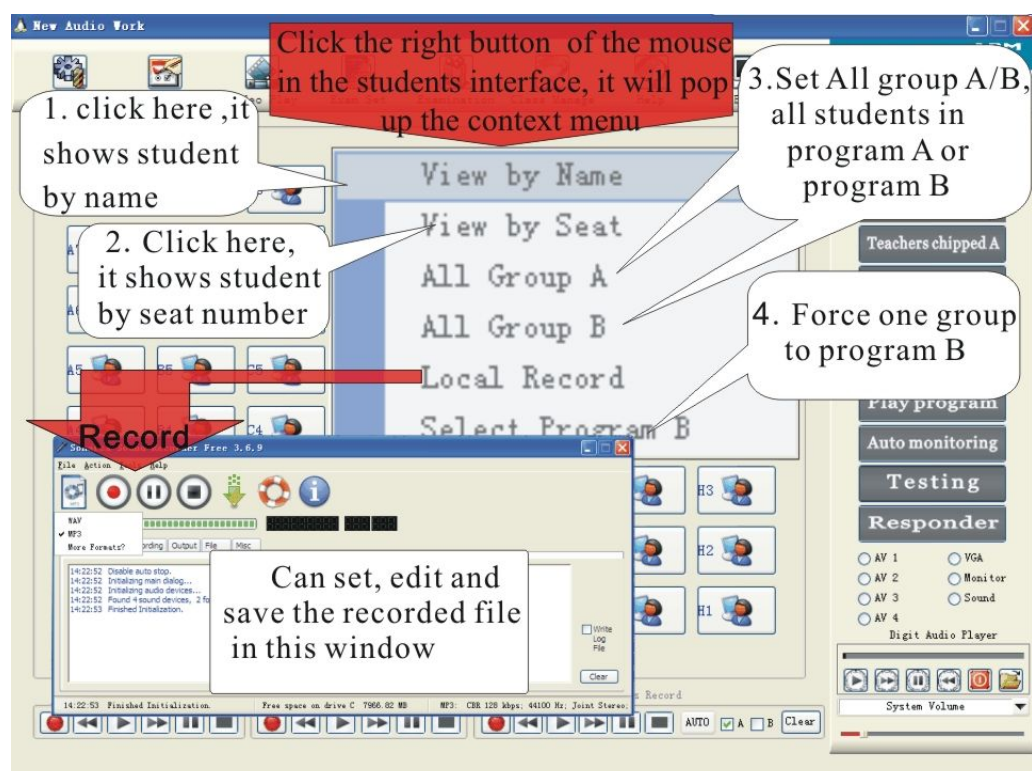


**12. Set seat number:** choose [Class Manage], it will pop up the following picture.

Edit, revise and save the student name step by step. System default it as create new class every time when enter to class manage. Save the setting, a new class is come out, save it as TXT. If revise the exiting class, only Load the saved TXT file, click the student seat number, revise the new name, the save it.

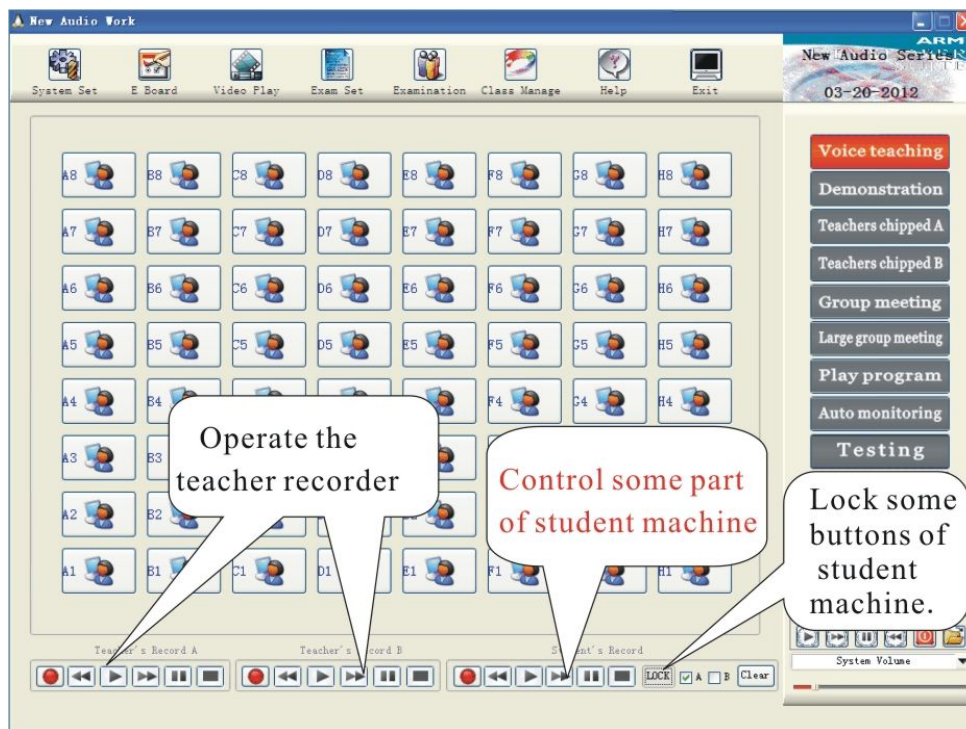


**13. Right button menu:** it includes display the student name, display the student by seat number, All Group A, All Group B, recording, force one group to Group B, etc



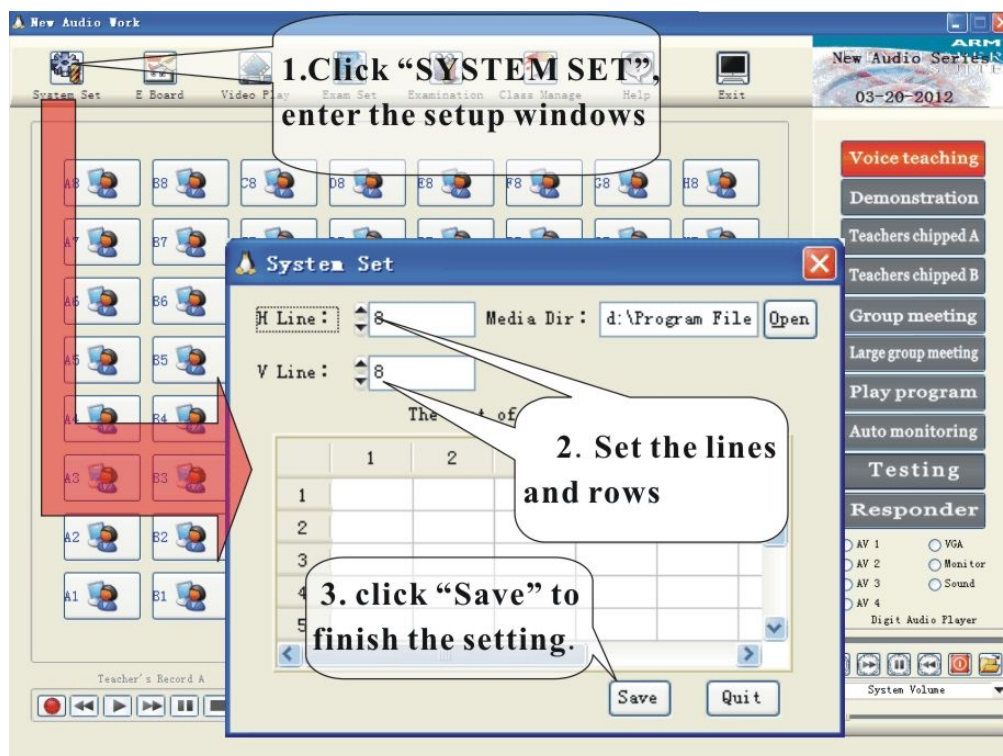


14. About “Help”, click “help”, you will see the specification of the system
15. Control the “Teacher’s record A”, “Teacher’s record B”, “student’s record”



#### Set the lines and rows:

1. Click [System Set] button in the auxiliary function area, set the lines and rows in the pop-up window

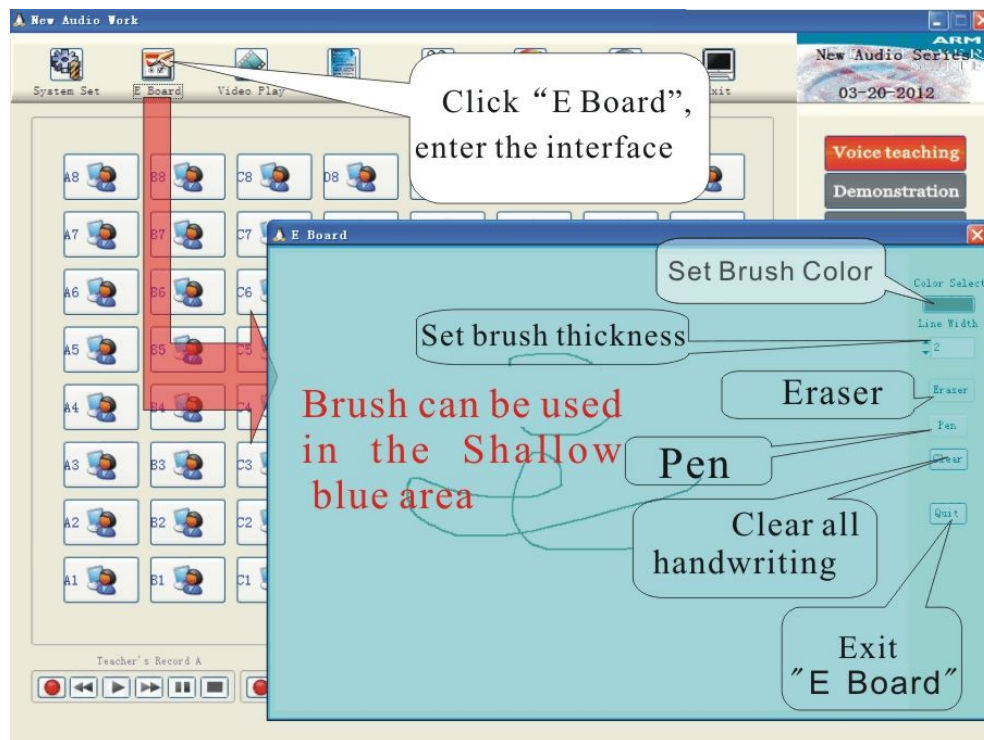


2. Save the setting
3. Restart the software.



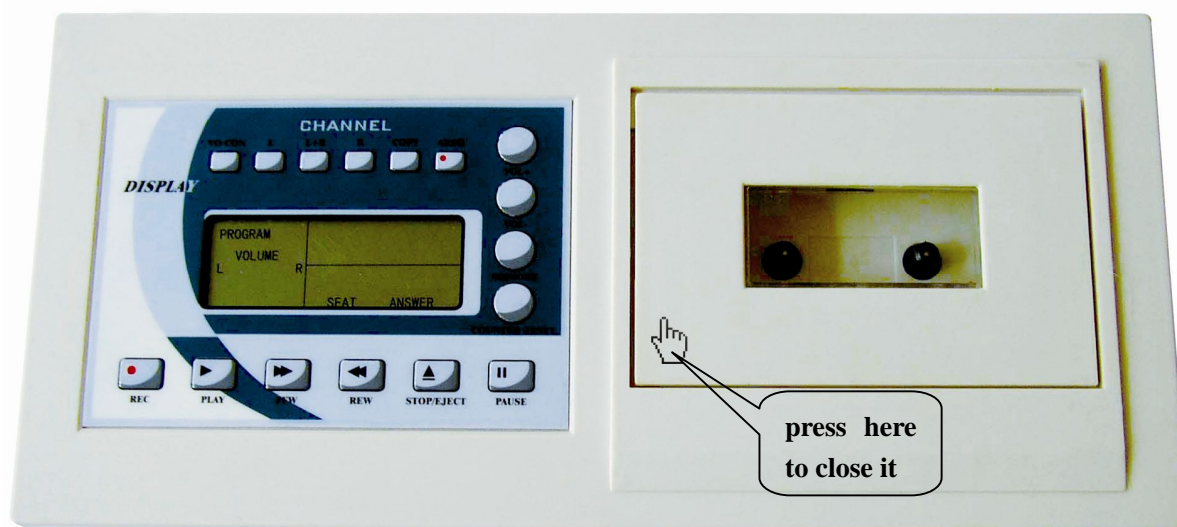
## Whiteboard

On the E Board, the teacher can write and explain on the computer window, and transfer the content or the video to whiteboard or projector screen through projector, picture as following:



Set the resolution of monitor to 1024\*768 before install the software

## Chapter 2 Teacher recorder instruction (OPTIONAL)



“**L,L+R,R**”: L audio channel, stereo and R audio channel

“**Vol+,vol-**”: volume increase and decrease

“**RESET**”: reset the counter zero

“**MEMORY**”: bookmark memory: press this button to store 5 bookmark when playing or recording, or to take out the stored bookmark under stop, and if press REW or FFW at this time, then when counter pass this bookmark, it will stop REW or FFW, and start to play

“**REC,PLAY,FFW, REW,STOP/EJECT,PAUSE**”: record, play, fast reverse, fast forward.stop/eject,pause

“**COPY**”: copy the program.

“**VO-CON**”: intermission function. Press it for one time to display “SP”, after one section, there will come a break, then continue, press it for twice to display

“SSP”, after two section, there will come a break, then continue, press it for three times to display “SSPSP”, after two sections, there will come a break, then continue to play, and after one section, there will come a break again, then continue.

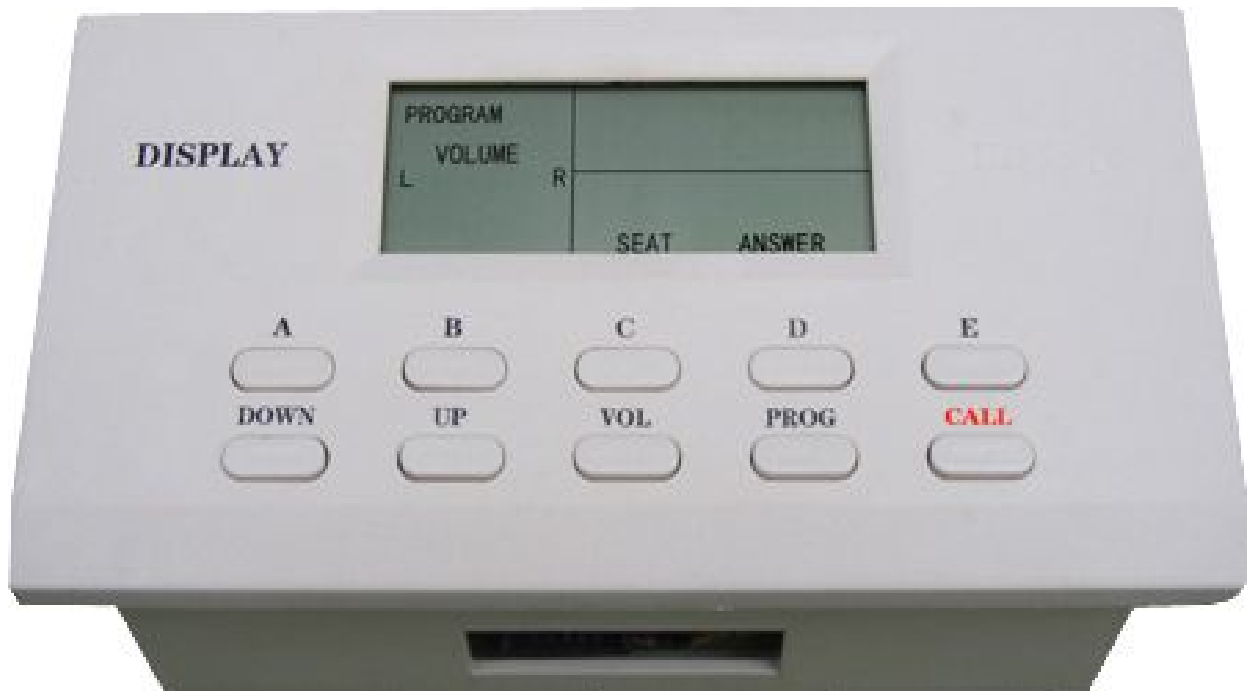
**Repeat function:** when playing, press “memory” to choose the start, then after sometime, press “play” button to choose the finish, then the machine will repeat between “A” and “B”.

When then above button active, the LCD screen will display it accordingly

---

## Chapter 3 student terminal operation instruction

This student machine belongs to listening and answering products. IT is LCD screen display, the picture as follow:



- **A,B,C,D,E:** Applied to choose the answer
- **VOL:** choose the volume
- **PROG:** choose multiple program channels
- **UP:** go up the text exam question number under the free exam
- **DOWN:** go down the text exam question number under the free exam
- **CALL:** call or race to answer
- **Student seat number setting:** Press A button for 3 seconds, then press Down button to adjust the row number( ABCDEFGH), and press UP button to adjust the line number(12345678),after adjustment,press A for 3 seconds to confirm and exit setting.

**When the above button active, the LCD screen will display it accordingly**

---

## Chapter 4 Language Lab Installation Guide

The language lab adopts the same main console and operation interface, the serial signal output. It's very convenient for customer installation and use

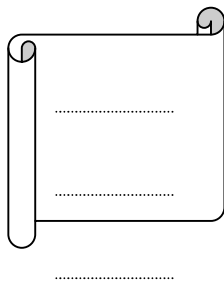
### 4.1 Preparation before Installation

1. Confirm the classroom dimension
2. Confirm the power supply
3. Confirm the special requirements of the school
4. Prepare the tool to install
5. Preparation before training

### 4.2 Test steps

1. Please install the system in right way and make sure all cable connected well
2. One student has only one seats number and all student machine is arranged in order
3. No audio crosstalk in "ALL CALL" and "Demo"
4. The voice and signal is good when teacher chip in
5. When play the program, open the teacher volume, there is no voice in the teacher part, while students can hear it
6. Press "CALL" button on the student machine, teacher can accept it and talk with each other
7. Turn off the program, can adjust the volume, teacher can talk with student
8. Can do exam
9. Test other functions

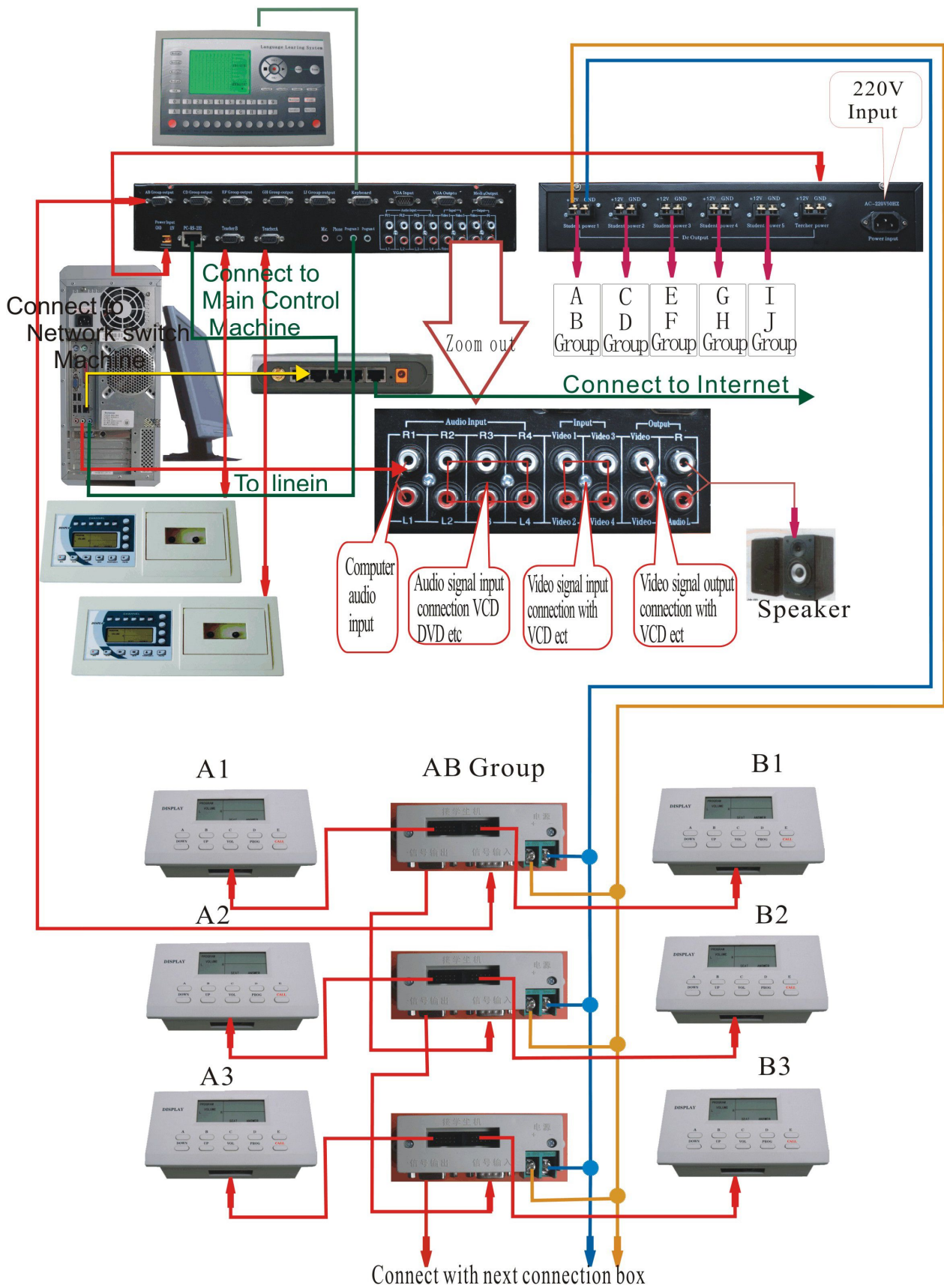
### §4.3 signal flow graph (one group as sample)



1. power supplier of main console and student terminal: +12V。
2. RS-232 com cable is 3 cores, length :2M, two sides plug is DB-9 female。
3. The connecting cable from teacher recorder to main console and from signal splitter to splitter are same, only difference on length
4. signal splitter is different for front half lines and rear half lines, which can not be confused. or the grouping function will be invalid.
5. Not allowed to plug or unplug the parts when power on
6. note the seat number of the student terminal



(connecting diagram of main console)

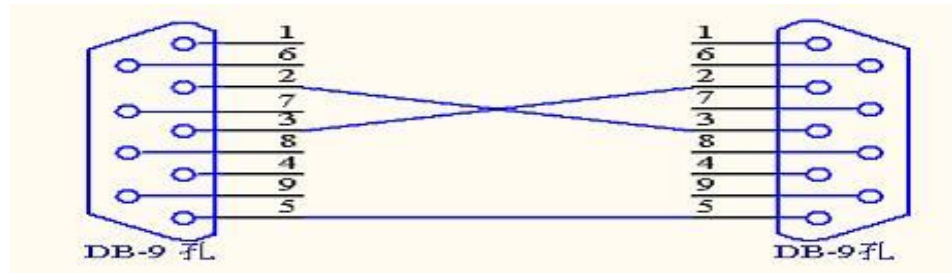


## 4.4 Trouble shooting

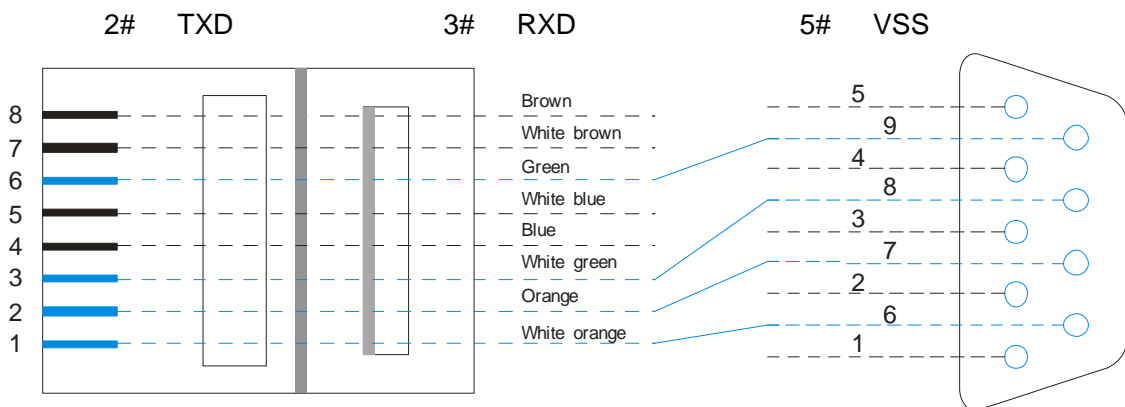
Problem	Reason	Solution
Some student can't call the teacher	1. The cable is in poor contact 2. Problem with distribution box 3. problem with student machine	1. Check the corresponding cable 2. Check the distribution box 3. Change the seat of the students
The whole student can't call the teacher	1. The COM cable is in poor contact 2. Problem with distribution box	1. Check the corresponding cable 2. Check the corresponding cable
The system not working	1. The Output line is short circuit 2. Problem with distribution box 3. Wrongly connect the power cable or problem with power 4. The students machine can't be reset	1. Check the system cable connection 2. Check the distribution box 3. Measure the power voltage 4. Check if the power cable is connected in good state
Some student machine can't enter exam	1. Problem with distribution box 2. the cable is in poor contact 3. problem with student machine	1. Check the distribution box 2. Check the corresponding cable 3. check the student machine
The system can't do exam	1. Problem with the software 2. Problem with External cable	1. Reinstall the software 2. Check out the system connection
Intercom confusion	1. Problem with distribution box	1. Check the distribution box
Group meeting confusion	wrongly install the distribution box	adjust the distribution box

## 4.5 signal cable assembling

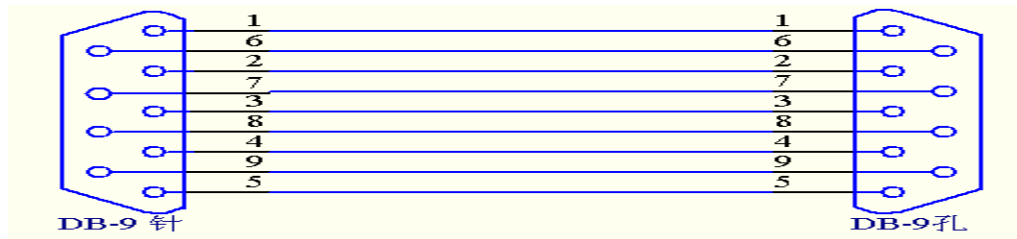
### 1. PC cable diagram



Function of pins:

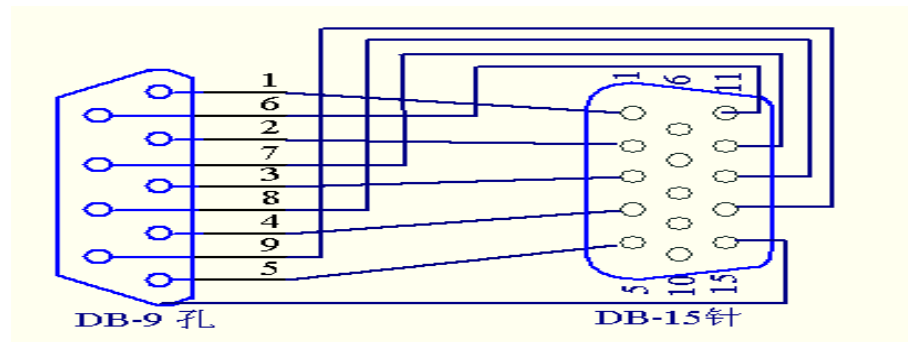


## 2. Teacher recorder cable diagram



Function of pins: 1#. Microphone recording input 2#. NC 3#. NC 4# L channel output 5# R channel output  
6# +12V power supplier 7# ground VSS 8# mutual recording 9# communication

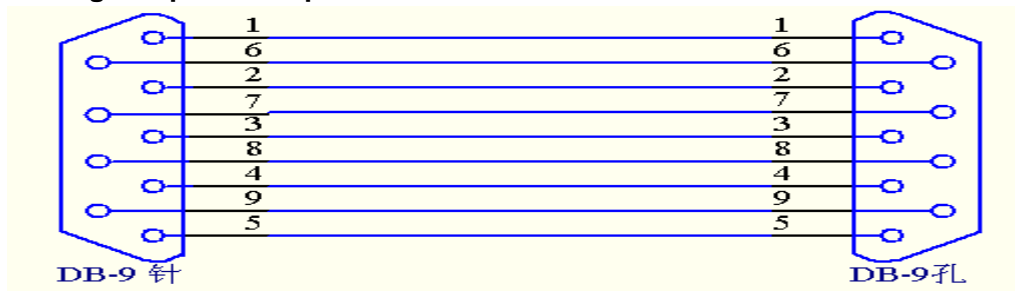
## 3. Cable from main console to first line student



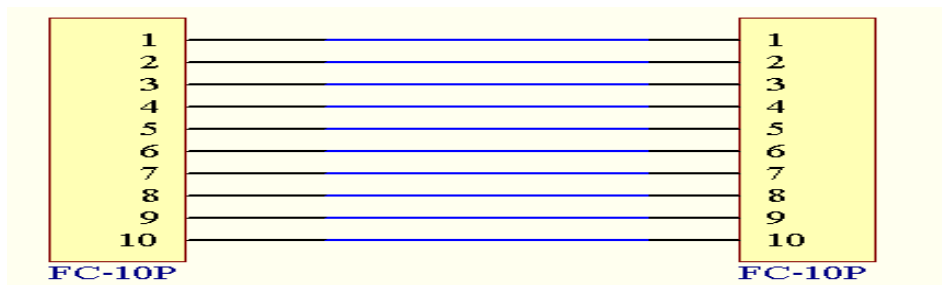
Function of pins:

1# communication input 2# communication output 3# and 5# audio A 4# and 10# audio B  
6. 7. 8. 9# talk

## 4. Cable from signal splitter to splitter



## 5. Student flat cable



Function of pins:

1# ground 2# talk 3# and 5# audio A 4# and 6# audio B  
7# communication input 8# communication output 9# +12V power supplier  
10# NC